

COUNT	DESCRIPTION OF REVISIONS	BY	CHKD	DATE	COUNT	DESCRIPTION OF REVISIONS	BY	CHKD	DATE
△					△				
△					△				

APPLICABLE STANDARD			
RATING	OPERATING TEMPERATURE RANGE	-40 °C TO +85°C	STORAGE TEMPERATURE RANGE °C TO °C
	VOLTAGE	AC 125 V	OPERATING HUMIDITY RANGE % TO %
	CURRENT	1 A	APPLICABLE CABLE

SPECIFICATIONS


ITEM	TEST METHOD	REQUIREMENTS	QT	AT
------	-------------	--------------	----	----

CONSTRUCTION				
GENERAL EXAMINATION	VISUALLY AND BY MEASURING INSTRUMENT.	ACCORDING TO DRAWING.	○	○
MARKING	CONFIRMED VISUALLY.		○	○

ELECTRIC CHARACTERISTICS				
CONTACT RESISTANCE	100 mA (DC OR 1000 Hz).	40 mΩ MAX.	○	○
INSULATION RESISTANCE	250 V DC.	1000 MΩ MIN.	○	-
VOLTAGE PROOF	350 V AC FOR 1 min.	NO FLASHOVER OR BREAKDOWN.	○	○

MECHANICAL CHARACTERISTICS				
INSERTION AND WITHDRAWAL FORCES	MEASURED BY APPLICABLE CONNECTOR.	INSERTION FORCE 29.4 N MAX. EXTRACTION FORCE 29.4 N MAX.	○	-
MECHANICAL OPERATION	20000 TIMES INSERTIONS AND EXTRACTIONS.	① CONTACT RESISTANCE: 60 mΩ MAX. ② NO DAMAGE, CRACK AND LOOSENESS, OF PARTS.	○	-
VIBRATION	FREQUENCY 10 TO 55 Hz, SINGLE AMPLITUDE 1.5 mm, - m/s ² AT 2 h, FOR 3 DIRECTIONS.	① NO ELECTRICAL DISCONTINUITY OF 10 μs. ② CONTACT RESISTANCE: 60 mΩ MAX. ③ NO DAMAGE, CRACK AND LOOSENESS, OF PARTS.	○	-
SHOCK	490 m/s ² DIRECTIONS OF PULSE 11 ms AT 3 TIME FOR 3 DIRECTION.		○	-

ENVIRONMENTAL CHARACTERISTICS				
RESISTANCE TO DRY HEAT	EXPOSED IN 85 °C, 500h.	① CONTACT RESISTANCE: 60 mΩ MAX. ② INSULATION RESISTANCE: 1000 MΩ MIN. ③ NO DAMAGE, CRACK AND LOOSENESS, OF PARTS.	○	-
RAPID CHANGE OF TEMPERATURE	TEMPERATURE -55→15~35 → 85 → 15~35 °C TIME 30 → 10~15 → 30 → 10~15 min UNDER 5 CYCLES.	① CONTACT RESISTANCE: 60 mΩ MAX. ② INSULATION RESISTANCE: 1000 MΩ MIN. ③ NO DAMAGE, CRACK AND LOOSENESS, OF PARTS.	○	-
DAMP HEAT (STEADY STATE)	EXPOSED AT 40 °C, 90~95 %, 96 h.	① CONTACT RESISTANCE: 60 mΩ MAX. ② INSULATION RESISTANCE: 1000 MΩ MIN. (AFTER DRY) ③ NO DAMAGE, CRACK AND LOOSENESS, OF PARTS.	○	-
CORROSION SALT MIST	EXPOSED IN 5 % SALT WATER SPRAY FOR 48 h.	① CONTACT RESISTANCE: 60 mΩ MAX. ② NO DAMAGE, CRACK AND LOOSENESS, OF PARTS.	○	-
HYDROGEN SULPHIDE	EXPOSED IN SO ₂ 10ppm, H ₂ S 3ppm, 70~80%, 96 h.		○	-

REMARKS	FOR REFERENCE ONLY	DRAWN	DESIGNED	CHECKED	APPROVED	RELEASED
	Subject to change without notice	J. Miura	A. Funatsu	<i>[Signature]</i>	<i>[Signature]</i>	
Unless otherwise specified, refer to JIS C 5402.		98.12.7	98.12.07	98.12.7	98.12.10	

Note QT:Qualification Test AT:Assurance Test ○:Applicable Test		SPECIFICATION SHEET		PART NO. 3560-16P-PG
CODE NO.(OLD) CL	DRAWING NO. SLC4-120892	CODE NO. CL235-0016-0	1/1	

TO
Q1



FOR REFERENCE ONLY
Subject to change without notice

FIG. 1
RECOMMENDED PCB PATTERN

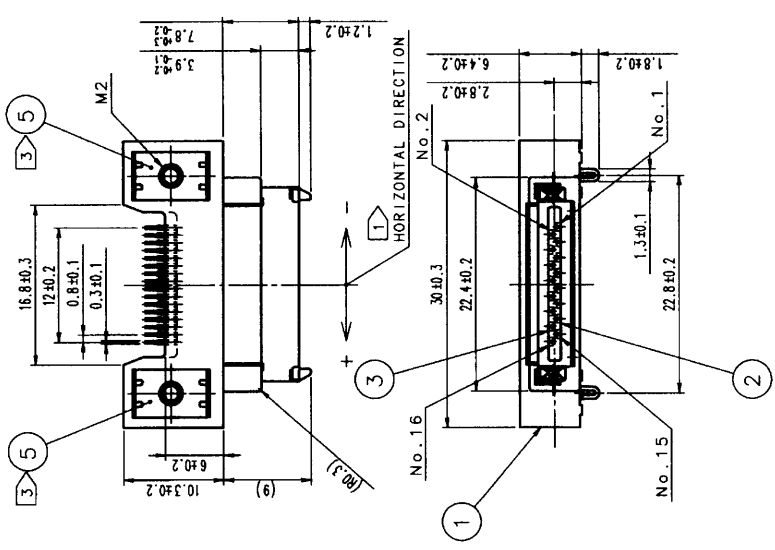
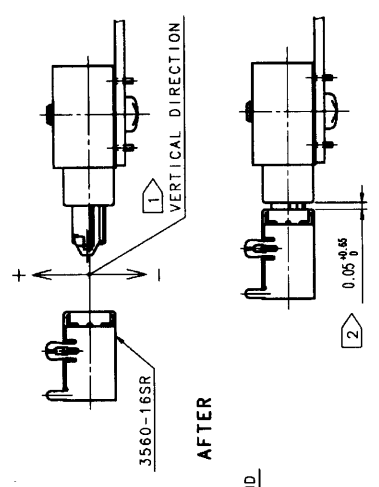
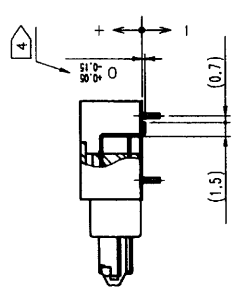


FIG. 2: BEFORE AND AFTER MATING



NOTE 1: FLOATING DISTANCE IN HORIZONTAL AND VERTICAL DIRECTIONS IS ±0.7. (APPLICABLE CONNECTOR: 3560-16S OR 3560-16SR)
 2: GAP BETWEEN MATED PLUG AND RECEPTACLE TO BE 0.05^{+0.05}₀.
 3: REFERENCE NO. 4 AND NO. 5 ARE CONNECTED INSIDE THE CONNECTOR. (GROUND IS TO BE CONNECTED TO PCB BY REFERENCE NO. 5.)
 4: SMT DIMENSION OF CONTACTS (REFERENCE NO. 2 AND NO. 3) SHOWN IN FIG. 3.

FIG. 3
SMT CONTACT DIMENSION



NO.	MATERIAL	FINISH, REMARKS	NO.	MATERIAL	FINISH, REMARKS
3	COPPER ALLOY	SELECTIVE GOLD PLATING + SELECTIVE TIN-LEAD PLATING	5	COPPER ALLOY	TIN-LEAD PLATING
2	COPPER ALLOY	SELECTIVE TIN-LEAD PLATING	4	STAINLESS STEEL	
1	POLYAMIDE	BLACK			

CODE NO. (OLD)	DESIGNED	CHECKED	APPROVED	RELEASED
	J. Moore	A. Funari	J. Moore	7 21 78
	18.12.7	18.12.07	18.12.10	USA

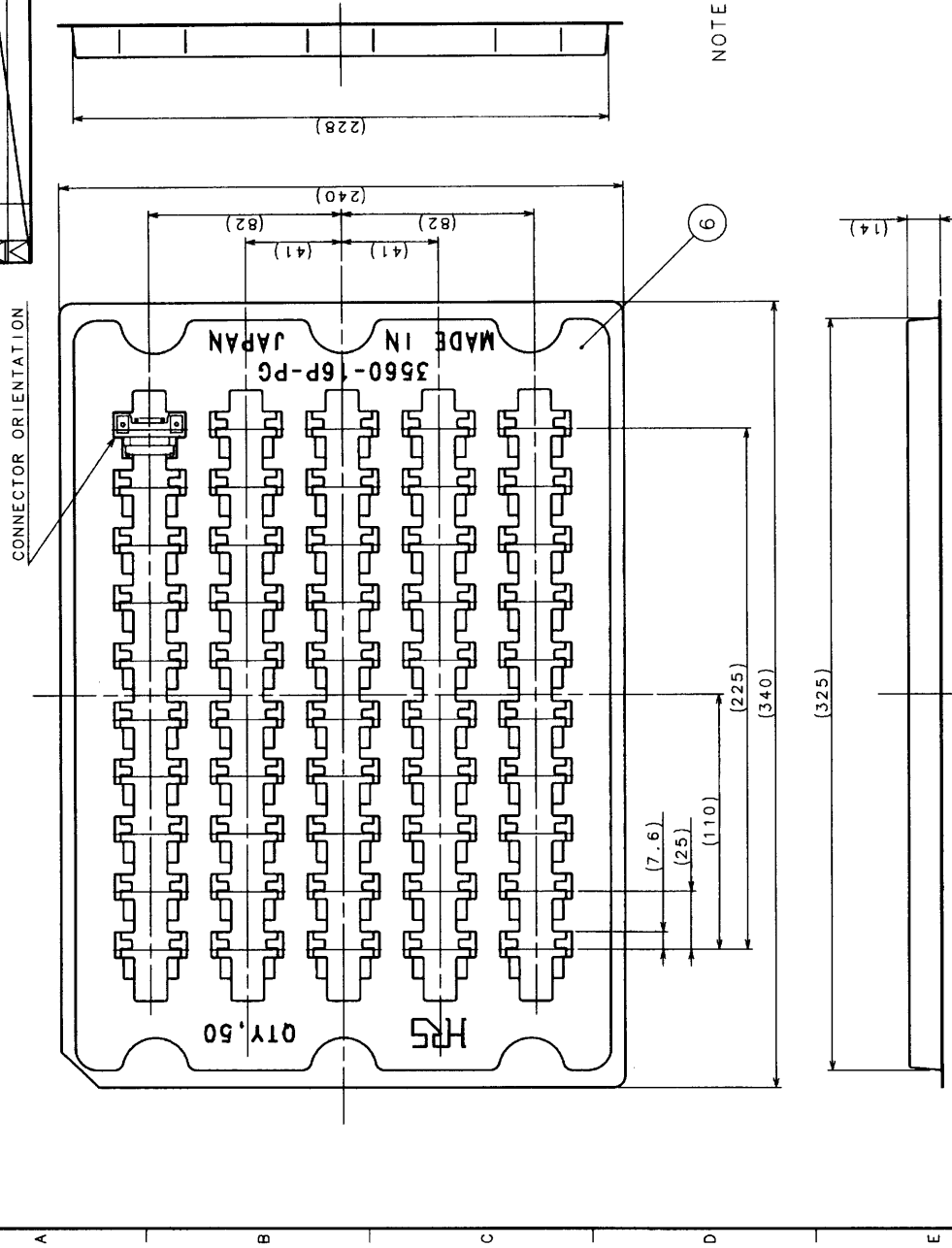
DRAWING NO. EDC3-120892 PART NO. 3560-16P-PG

SCALE 2:1 UNITS mm CODE NO. CL235-0016-0

HRS HIROSE ELECTRIC CO., LTD.

FORM NO. 229

FIG-4. TRAY DIMENSION



NOTE 5 CONNECTOR ORIENTATION IN TRAY
CAVITIES SHOWN IN FIG-4.

6 CONNECTORS TO BE PACKAGED
PER TRAY = 50 PCS.
NOTE: PLEASE ORDER THE
CONNECTOR QUANTITY.

FOR REFERENCE ONLY
Subject to change without notice

6	PVC	FINISH. REMARKS	MATERIAL	DESIGNED	CHECKED	APPROVED	FINISH. REMARKS
NO.	MATERIAL						
CODE NO. (OLD)							
PACKAGING SPECIFICATION				DRAWN		APPROVED	
				A. Furusaki		J. Saito	
				98.12.7		98.12.10	
DRAWING NO.				PART NO.			
EDC3-120892				3560-16P-PG			
SCALE				CODE NO.			
2 : 1				CL235-0016-0			
UNITS				DRAWING NO.			
mm				EDC3-120892			
HRS				HIROSE ELECTRIC CO., LTD.			